

## Monthly Weather Summary in Thailand

### January 2018

In January 2018, high pressure area from China periodically extended its ridge to cover upper Thailand causing cool weather in the northern and northeastern parts almost the entire month with cold weather in the upper northern part and cool weather presented in many areas for the rest of the parts. Active high pressure area persisted continuously during mid-January caused temperature decreased with generally cool weather in upper Thailand and cold weather in the northern and northeastern parts and some areas of central including Bangkok and vicinity and eastern part as well. For rainfall, with the prevailing of westerly wind in upper level over upper northern part and the easterly wind blowing over most areas of upper Thailand causing intermittent rainfall in upper Thailand mainly during the beginning and the end of the month. In southern part, the influence of northeast monsoon prevailed over the Gulf of Thailand during the beginning and the middle of the month and the easterly wind prevailed over southern part during the end of the month resulted in isolated to scattered rain almost the whole month, particularly during intensified northeast monsoon bringing major rainfall events with decreasing temperature at that times.

Mean temperature in January was above normal in most parts except for slightly below normal in the west coast of southern part. Monthly total rainfall over Thailand was higher than normal in all parts i.e. northern part 6.7 mm (146%), northeastern part 0.3 mm (6%), central 37.0 mm (552%), eastern part 47.0 mm (292%), southern part (east coast) 70.9 mm (119%) and southern part (west coast) 156.6 mm (593%).

**1–10 January :** During early period, active high pressure area from China extended to cover upper Thailand during and weakened later. Westerly wind in upper level prevailing over upper northern part during mid-period and another active high pressure area from China covered the northeastern part during late period resulted in cool weather in most areas of upper Thailand during the first half of the period with cold weather in some of the upper northern and northeastern parts during early period after that temperature increased but cool weather remained in the northern and northeastern parts. The lowest minimum temperature of the period was 13.1 °C, at Agrometeorological station in Nakhon Phanom province on January 1. In the mountainous areas and mountain tops, minimum temperature dropped to 6.8 °C at Doi Inthanon, Chiang Mai province on the same day. For rainfall, northern part experienced unusual rainfall almost the whole period while scanty rain was found for the rest of the parts during the second half of the period, especially during late period eastern part and Bangkok and vicinity experienced fairly widespread to widespread rain with heavy to very heavy rainfall. The maximum daily rainfall over upper Thailand was 145.2 mm at Wat Sapsamoson School, Khet Nong Chok in Bangkok Metropolis on January 9. The active northeast monsoon prevailed over the Gulf of Thailand and southern part during the first half of the period and late period. Cool weather was observed in many areas of southern Thailand with scattered to fairly widespread

rain and heavy rainfall in some areas almost the whole period along the east coast, especially on January 7 that experienced very heavy rainfall in some areas with highest daily rainfall of 145.0 millimeter at Krasae Sin in Songkhla province. Isolated rain was found along the west coast during the first half of the period after that increasing in rainfall to scattered to fairly widespread rain with heavy rainfall in some areas.

**11-20 January :** The continuation of active high pressure area from China extended to cover upper Thailand during the first half of the period and weakened later, accompanied with the active northeast monsoon prevailed over the Gulf of Thailand and southern parts during the first half of the period. Consequently, temperature decreased nationwide with generally cool and cold weather in Thailand, successive cold weather occurred in upper northern and northeastern parts during the first half of the period with cold weather in some areas in the upper central, eastern and southern parts. The minimum temperature of the period was  $9.6^{\circ}\text{C}$  at Agrometeorological station in Nakhon Phanom province on January 13. In the mountainous areas and mountain tops, temperature climbed down to  $2.6^{\circ}\text{C}$  at Kew Mae Pan, Chom Thong in Chiang Mai province on January 20. For rainfall, scanty rainfall was found in the northern, northeastern and eastern parts during early period with the maximum daily rainfall of 7.0 millimeter at Amphoe Mueang in Phayao province on January 11. In southern part, abundant rainfall was mainly observed during early and late period with scattered to fairly widespread rain and heavy to very heavy rainfall in some areas, the highest daily rainfall of 180.3 millimeter was measured at Cho-airong in Narathiwat province on January 11.

**21-31 January :** The high pressure area from China covered upper Thailand during early period after that it propagated eastwards to cover the South China Sea and the another active high pressure area from China extended to cover the northeastern part and the South China Sea during late period. In addition, the westerly wind in the upper level moved to cover the upper northern almost the period and the easterly wind prevailing over the eastern and southern parts during early and late period as well as the southeasterly wind blowing over most areas of Thailand during mid-period. These caused increasing temperature in Thailand, cool weather remained in the northern and northeastern parts with cold weather in the upper northern part almost the period and cool weather in some areas for the rest parts. The lowest temperature was  $9.3^{\circ}$  in Mae Sariang, Mae Hong Son Province on January 31. Cold weather in mountainous areas and mountain tops especially in the mountainous areas in the northern part that experienced very cold weather with the lowest temperature of  $0.5^{\circ}\text{C}$  at Royal Agricultural Station Angkhang, Fang in Chiang Mai province on January 24. For rainfall, isolated rain was found in the northern and northeastern parts during the second half of the period and isolated to scattered rain with heavy to very heavy rainfall in some areas in the central and eastern part during the middle and the end of the period. The highest daily rainfall in upper Thailand was 153.2 millimeter at Thung Setthi Village, Khet Pravet in Bangkok Metropolis on January 31. In southern part, rainfall was mainly observed along the west coast with fairly widespread to widespread rain and heavy to very heavy rainfall in some areas while isolated rain was found

along the east coast except for scattered to fairly widespread rain with heavy rainfall in some areas on January 21, 22 and 24. The maximum daily rainfall was 140.0 millimeter at Ko Lanta in Krabi province on January 28.

**Note** : Rainfall, temperatures and natural disasters in this report were updated up to February 2, 2018.

Climatological Center  
 Meteorological Development Division  
 Meteorological Department

#### Breaking records of the highest daily rainfall in January

Station	New Record 2018		Previous Record		Start since
	Rainfall (mm.)	Date	Rainfall (mm.)	Date / Year	
Nakhon Phanom Agromet. Stn.	25.2	7	18.1	23/2012	1983
Bua Chum (Lop Buri)	94.2	9	44.4	4/1992	1970
Pathum Thani Agromet. Stn.	39.0	10	18.8	5/2010	1998
Sirikit (Bangkok Metropolis)	62.3	31	62.1	30/2008	1951
Klong Toei (Bangkok Metropolis)	152.5	31	65.9	30/2008	1994
Bang Na Agromet. Stn.	110.9	31	76.1	19/2016	1969
Prachin Buri	72.9	9	58.2	22/1984	1951
Kabin Buri (Sa Kaew)	82.1	9	54.2	7/2010	1970
Sa Kaew	70.4	9	49.9	18/2000	1998
Phuket Airport	120.8	22	95.2	28/2016	1952

Breaking records of the highest monthly rainfall in January

Station	New Record	Previous Record		Start since
	Rainfall (mm.)	Rainfall (mm.)	Year	
Bua Chum (Lop Buri)	99.5	65.4	2010	1970
Pathum Thani Agromet. Stn.	60.1	23.2	2010	1998
Sirikit (Bangkok Metropolis)	131.2	99.9	2010	1951
Klong Toei (Bangkok Metropolis)	236.5	102.7	2010	1994
Bang Na Agromet. Stn.	258.0	116.0	2016	1969
Prachin Buri	103.4	58.2	1984	1951
Kabin Buri (Sa Kaew)	174.3	55.4	2010	1970
Sa Kaew	104.4	56.2	2000	1998
Chachoengsao Agromet. Stn.	196.4	79.7	1997	1989
Takua Pa (Phang-nga)	259.0	209.8	2012	1981
Phuket Airport	271.0	200.9	2017	1952

Monthly Current Report  
Rainfall and Accumulative Rainfall  
January 2018

Northern Thailand

Station	Temperature ( °c)		Rainfall (mm)		Accumulative rainfall (mm) Since 1 January	
	Mean	Above or below normal	Actual	Above or below normal	Actual	Above or below normal
Chiang Rai	21.0	1.3	6.5	-1.0	6.5	-1.0
Mae Hong Son	21.9	1.3	5.4	-1.0	5.4	-1.0
Phayao	21.4	0.8	7.9	2.2	7.9	2.2
Chiang Mai	23.4	1.9	0.3	-3.9	0.3	-3.9
Tha Wang Pha	21.6	1.0	30.8	23.8	30.8	23.8
Nan	22.8	1.4	14.4	10.0	14.4	10.0
Lamphun	23.1	1.4	0.0	-2.8	0.0	-2.8
Lampang	23.4	1.2	25.4	22.6	25.4	22.6
Mae Sariang	22.6	2.2	0.4	-1.1	0.4	-1.1
Phrae	24.0	1.7	23.8	18.0	23.8	18.0
Uttaradit	25.4	1.3	7.0	1.5	7.0	1.5
Bhumibol Dam	24.2	0.5	0.0	-2.6	0.0	-2.6
Tak	25.3	1.2	15.6	13.5	15.6	13.5
Mae Sot	24.9	2.5	0.0	-1.7	0.0	-1.7
Umphang	22.7	2.5	32.0	25.2	32.0	25.2
Phitsanulok	25.7	0.9	0.1	-3.8	0.1	-3.8
Lom Sak	25.3	1.0	2.8	-2.0	2.8	-2.0
Phetchabun	25.6	1.5	27.5	21.9	27.5	21.9
Wichian Buri	26.2	0.9	18.1	10.4	18.1	10.4
Kamphaeng Phet	26.0	1.2	7.2	4.9	7.2	4.9
Over the area	23.8	1.4	11.3	6.7 146%	11.3	6.7 146%

Northeastern Thailand

Station	Temperature ( °c)		Rainfall (mm)		Accumulative rainfall (mm) Since 1 January	
	Mean	Above or below normal	Actual	Above or below normal	Actual	Above or below normal
Nong Khai	23.9	1.4	20.8	12.5	20.8	12.5
Loei	23.1	1.4	27.7	21.5	27.7	21.5
Udon Thani	23.8	1.0	0.0	-6.3	0.0	-6.3
Nakhon Phanom	23.4	1.2	2.3	-0.7	2.3	-0.7
Sakon Nakhon	23.2	1.1	0.0	-4.7	0.0	-4.7
Mukdahan	23.7	1.1	0.0	-3.7	0.0	-3.7
Khon Kaen	24.3	0.9	1.0	-3.0	1.0	-3.0
Kosum Phisai	24.8	1.1	1.9	-1.6	1.9	-1.6
Roi Et	24.8	1.5	0.9	-2.7	0.9	-2.7
Chaiyaphum	25.5	1.3	0.0	-4.5	0.0	-4.5
Ubon Ratchathani	25.7	1.5	0.0	-2.0	0.0	-2.0
Tha Tum	24.7	0.7	1.5	-3.6	1.5	-3.6
Surin	25.5	1.4	17.3	11.7	17.3	11.7
Nakhon Ratchasima	25.6	1.3	2.6	-5.6	2.6	-5.6
Chok Chai	25.3	0.9	1.1	-2.9	1.1	-2.9
Nang Rong	24.8	0.5	4.1	-0.6	4.1	-0.6
Over the area	24.5	1.1	5.1	0.3 6%	5.1	0.3 6%

- NOTES :
- 1) Mean temperature is the average of daily dry-bulb temperature
  - 2) "T" is trace, rainfall amount less than 0.1 mm.
  - 3) "blank" is incomplete data.
  - 4) Temperature and rainfall are preliminary data.

Monthly Current Report  
Rainfall and Accumulative Rainfall  
January 2018

Central Thailand

Station	Temperature ( °c)		Rainfall (mm)		Accumulative rainfall (mm) Since 1 January	
	Mean	Above or below normal	Actual	Above or below normal	Actual	Above or below normal
Nakhon Sawan	26.3	0.8	4.7	0.4	4.7	0.4
Bua Chum	25.6	0.6	99.5	92.8	99.5	92.8
Lop Buri	27.1	0.7	45.7	40.0	45.7	40.0
Suphan Buri	26.8	1.1	0.4	-3.3	0.4	-3.3
Thong Pha Phum	26.0	1.2	14.2	8.8	14.2	8.8
Kanchanaburi	27.2	1.2	0.0	-3.3	0.0	-3.3
Bangkok Airport	27.4	0.4	54.1	42.7	54.1	42.7
Bangkok Metropolis	27.6	0.6	131.2	117.9	131.2	117.9
Over the area	26.8	0.9	43.7	37.0 552%	43.7	37.0 552%

Eastern Thailand

Station	Temperature ( °c)		Rainfall (mm)		Accumulative rainfall (mm) Since 1 January	
	Mean	Above or below normal	Actual	Above or below normal	Actual	Above or below normal
Prachin Buri	27.7	0.9	103.4	95.7	103.4	95.7
Kabin Buri	26.2	-0.1	174.3	165.3	174.3	165.3
Aranyaprathet	27.1	1.0	84.7	79.3	84.7	79.3
Chon Buri	27.4	0.5	47.0	37.1	47.0	37.1
Ko Sichang	26.5	0.0	26.1	15.2	26.1	15.2
Pattaya	26.4	0.1	33.0	17.4	33.0	17.4
Sattahip	26.2	0.0	32.8	7.2	32.8	7.2
Rayong	26.6	0.4	5.6	-15.1	5.6	-15.1
Chanthaburi	27.0	0.6	38.8	20.1	38.8	20.1
Khlong Yai	27.0	0.5	85.3	48.1	85.3	48.1
Over the area	26.8	0.4	63.1	47.0 292%	63.1	47.0 292%

- NOTES :
- 1) Mean temperature is the average of daily dry-bulb temperature
  - 2) "T" is trace, rainfall amount less than 0.1 mm.
  - 3) "blank" is incomplete data.
  - 4) Temperature and rainfall are preliminary data.

Monthly Current Report  
Rainfall and Accumulative Rainfall  
January 2018

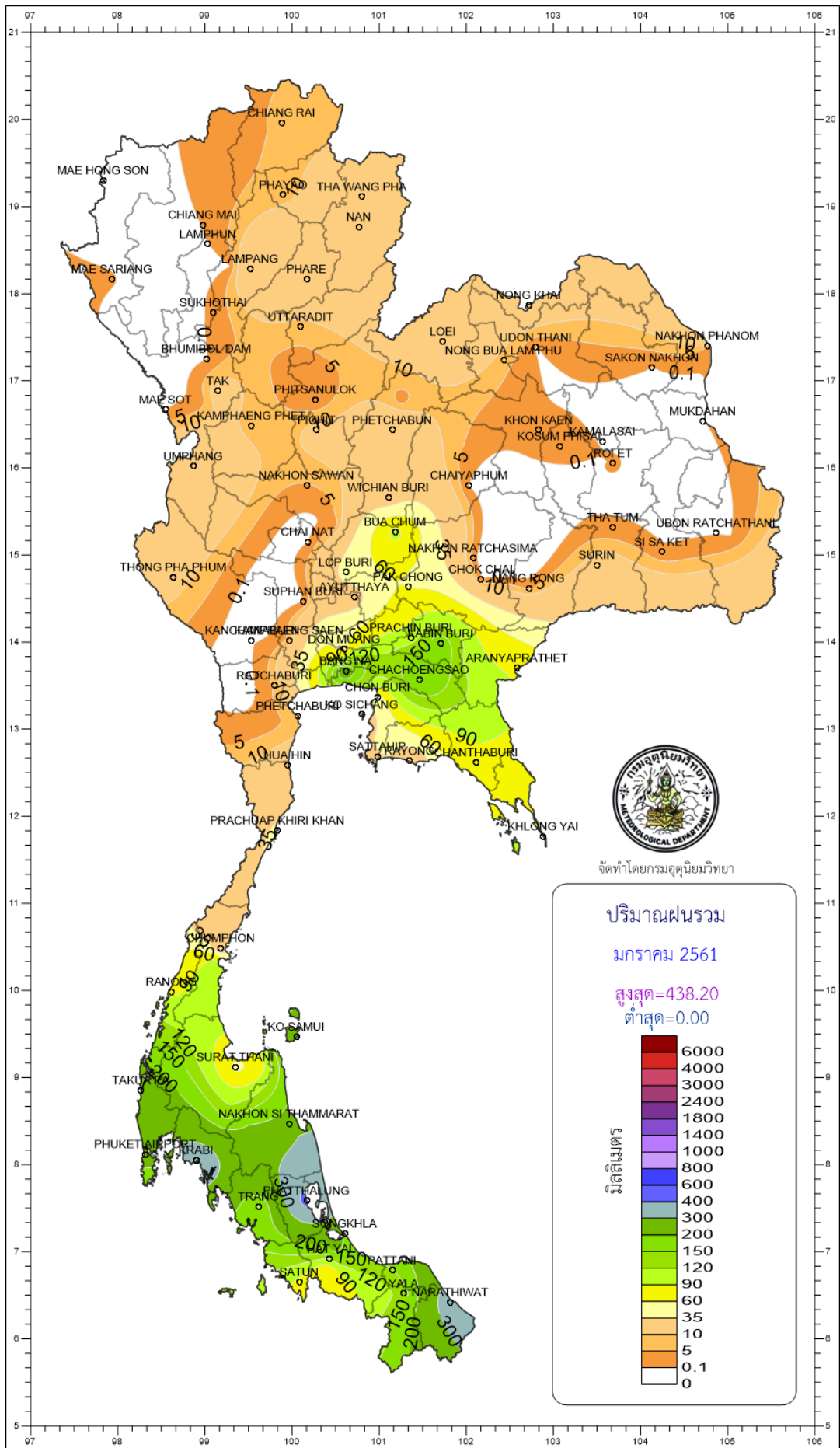
Southern Thailand, east coast

Station	Temperature ( °c)		Rainfall (mm)		Accumulative rainfall (mm) Since 1 January	
	Mean	Above or below normal	Actual	Above or below normal	Actual	Above or below normal
Phetchaburi	26.6	0.8	8.6	-2.8	8.6	-2.8
Hua Hin	26.7	0.7	19.8	8.0	19.8	8.0
Prachuap Khiri Khan	26.2	0.8	38.5	14.1	38.5	14.1
Chumphon	26.4	0.7	9.8	-49.6	9.8	-49.6
Surat Thani	25.9	0.3	54.1	17.3	54.1	17.3
Ko Samui	26.6	-0.2	259.0	172.8	259.0	172.8
Nakhon Si Thammarat	26.1	0.1	226.6	81.2	226.6	81.2
Songkhla	26.8	-0.3	193.8	119.0	193.8	119.0
Hat Yai Airport	26.3	0.3	119.0	65.2	119.0	65.2
Pattani Airport	26.5	0.5	147.1	96.2	147.1	96.2
Narathiwat	25.9	-0.2	360.5	258.9	360.5	258.9
Over the area	26.4	0.4	130.6	70.9 119%	130.6	70.9 119%

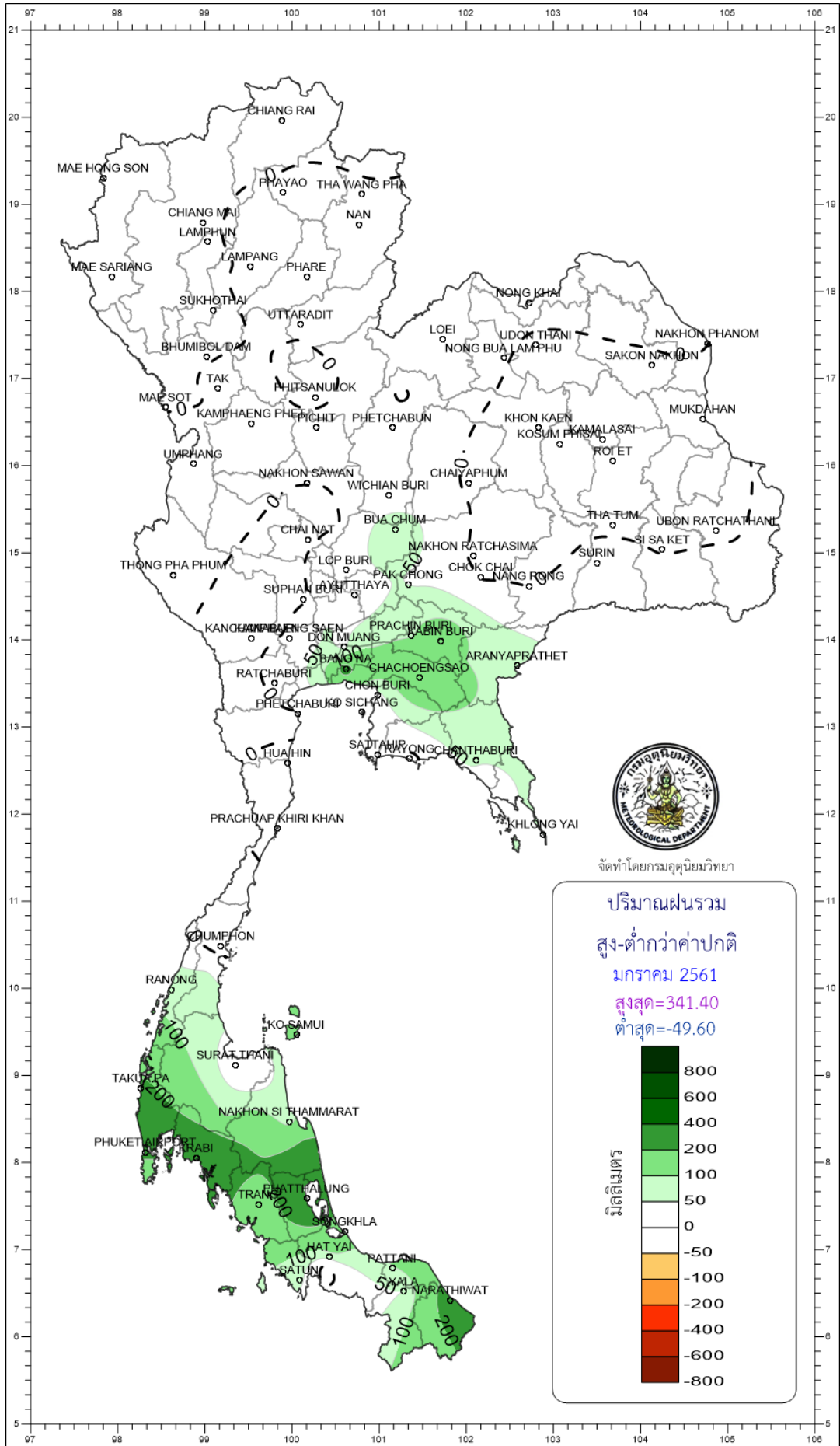
Southern Thailand, west coast

Station	Temperature ( °c)		Rainfall (mm)		Accumulative rainfall (mm) Since 1 January	
	Mean	Above or below normal	Actual	Above or below normal	Actual	Above or below normal
Ranong	26.6	-0.1	85.8	75.8	85.8	75.8
Takua Pa	26.7	0.3	259.0	219.6	259.0	219.6
Phuket	27.9	-0.2	156.8	126.5	156.8	126.5
Phuket Airport	27.2	0.2	271.0	234.8	271.0	234.8
Ko Lanta	27.2	-0.4	276.8	261.9	276.8	261.9
Trang Airport	26.6	-0.2	148.0	115.5	148.0	115.5
Satun	26.9	-0.6	83.6	62.4	83.6	62.4
Over the area	27.0	-0.2	183.0	156.6 593%	183.0	156.6 593%

- NOTES :
- 1) Mean temperature is the average of daily dry-bulb temperature
  - 2) "T" is trace, rainfall amount less than 0.1 mm.
  - 3) "blank" is incomplete data.
  - 4) Temperature and rainfall are preliminary data.





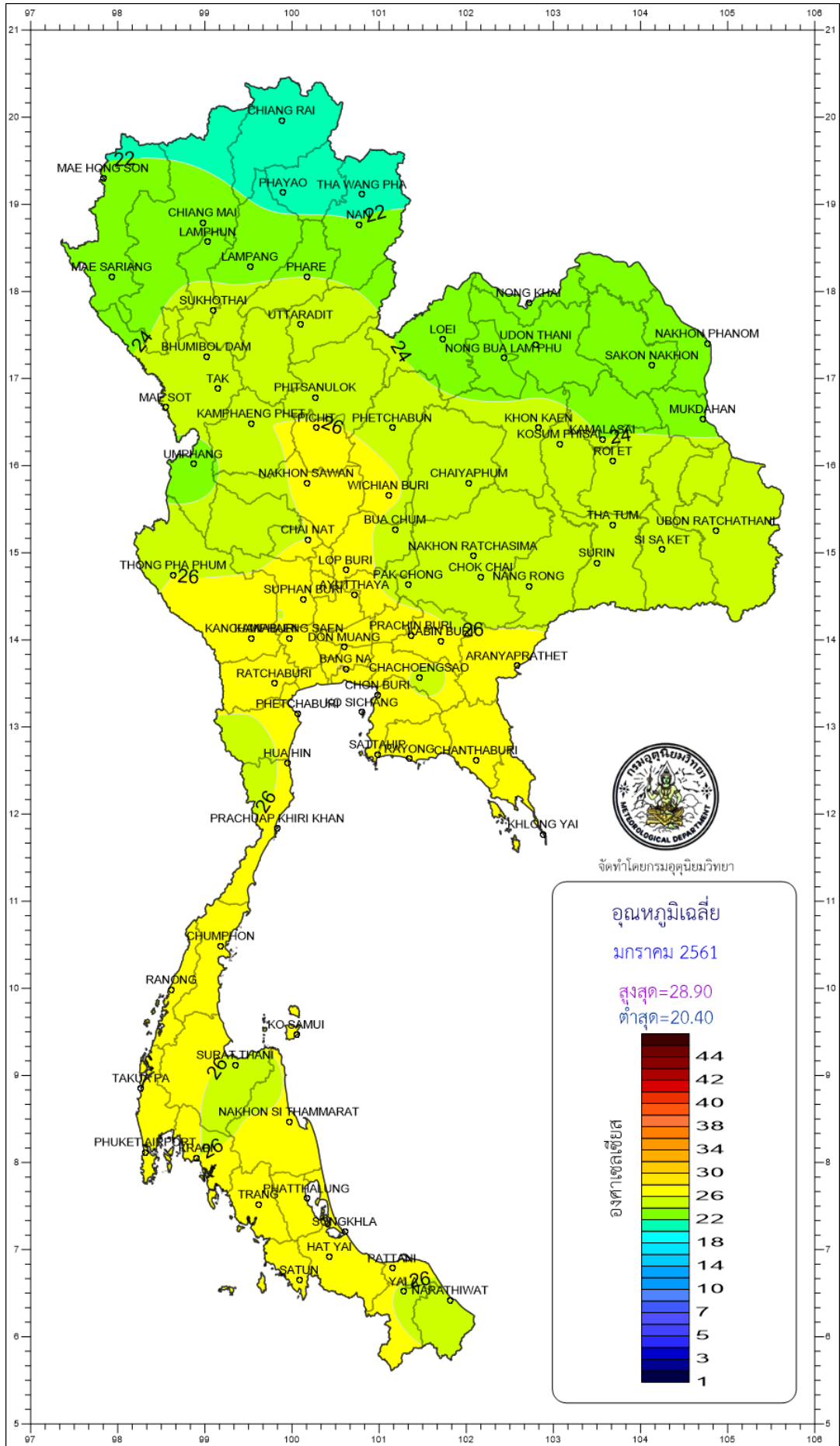


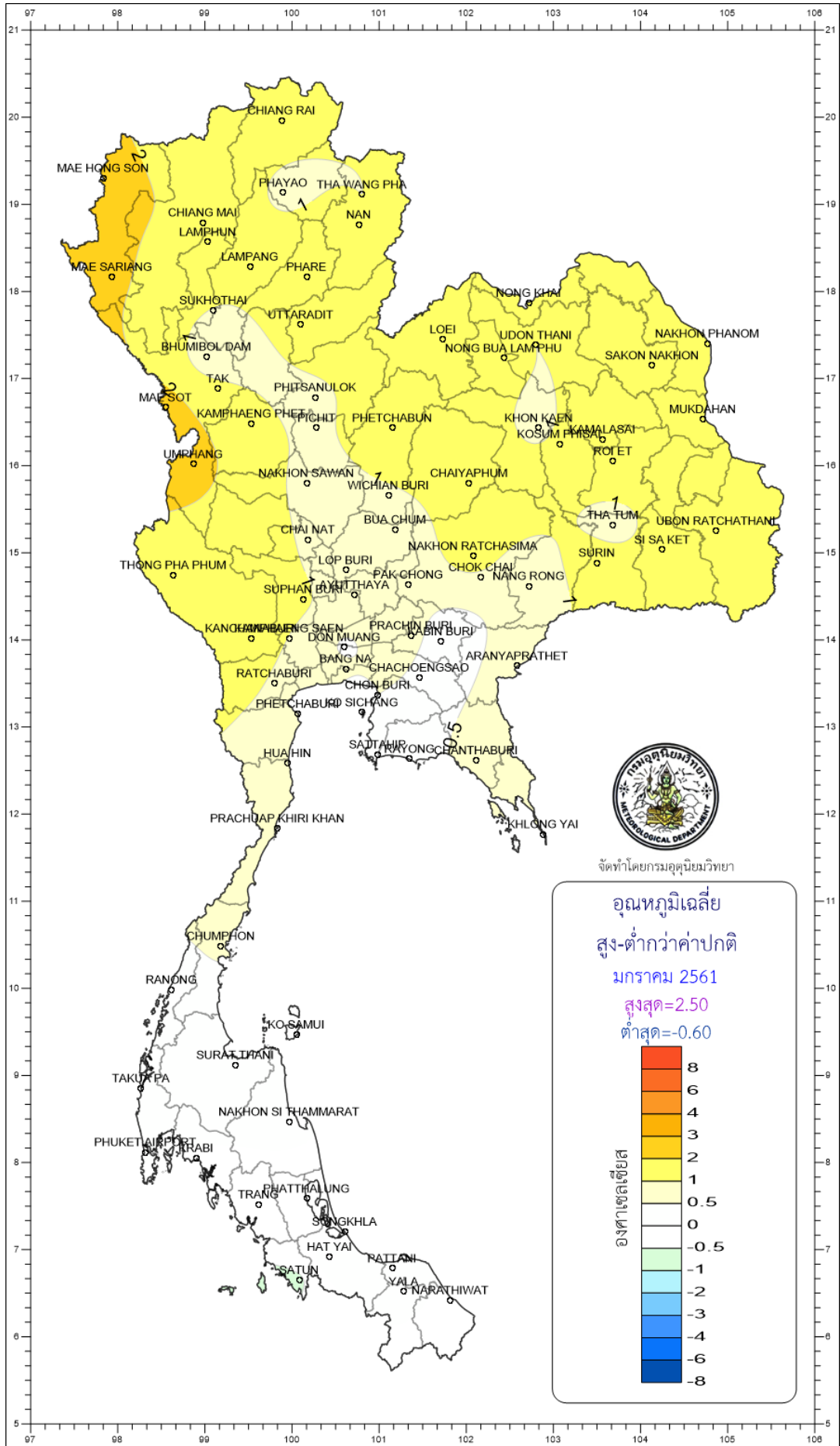
จัดทำโดยกรมอุตุนิยมวิทยา

ปริมาณฝนรวม  
สูง-ต่ำกว่าค่าปกติ  
มกราคม 2561  
สูงสุด=341.40  
ต่ำสุด=-49.60

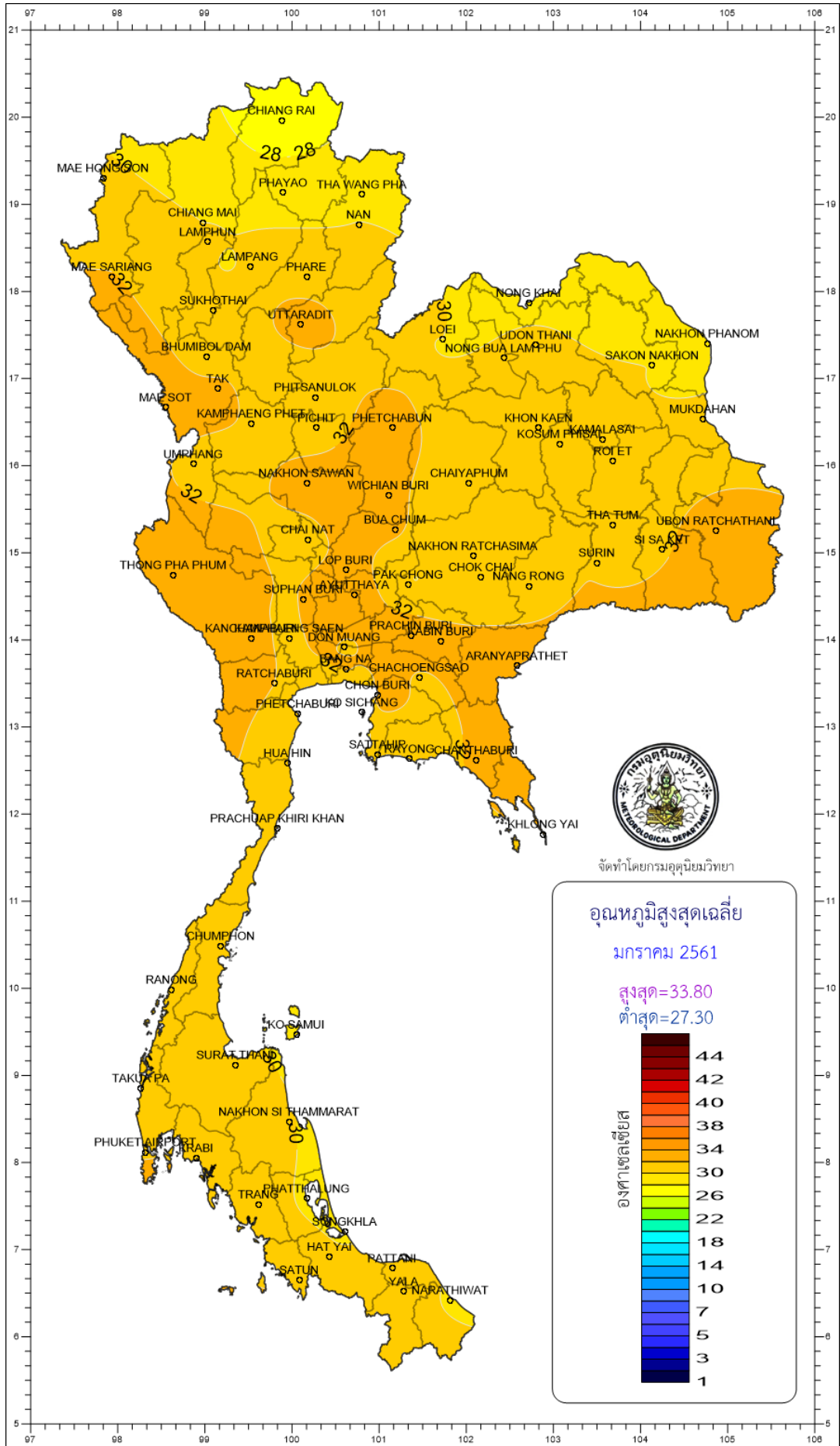
มิลลิเมตร

800
600
400
200
100
50
0
-50
-100
-200
-400
-600
-800





จัดทำโดยกรมอุตุนิยมวิทยา



จัดทำโดยกรมอุตุนิยมวิทยา

